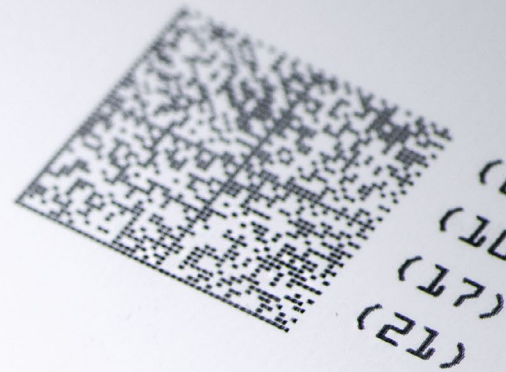


# GENESIS®

COMPACT AND FULLY  
AUTOMATED SERIALISATION  
AND AGGREGATION STATIONS  
DESIGNED FOR PHARMA  
MANUFACTURING



Enabling trust



[CLICK HERE  
FOR MORE  
INFORMATION!](#)



# GENESIS<sup>®</sup>, A MODULAR SOLUTION ADAPTED TO ALL PRODUCTION LINES

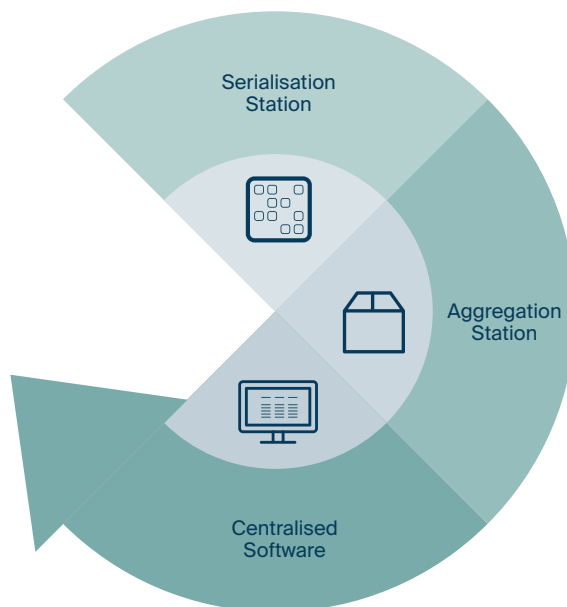
GENESIS<sup>®</sup> is a product line covering level 1 to 3 for pharma serialisation with modular elements. It is controlled by a centralised software managing all core functions, supported by different hardware modules. Adding and configuring new modules in multiple sites and across CMOs is straightforward. Likewise, moving production orders from one line to another can be done in just few seconds.

This **multi-tenancy software** allows generation and importation of serial number pools. It offers complete **production reporting** with **audit trail** detailing transactions related to any item.

The Swiss-designed **hardware modules** are easy to use thanks to their large touch screen control display and ergonomic user interface.

The **Serialisation Station** comes as a stand alone module that can be moved across the production floor, or as an OEM kit to be integrated onto a specific production line.

The dual high-resolution cameras of the **Aggregation Station** provide maximum mobility and flexibility to align with any existing packing process.



# SICPA, ENABLING TRUST IN PRODUCT AUTHENTICATION

The SICPA service approach to serialisation is based on over 90 years of experience in understanding and accompanying the most demanding customers worldwide. SICPA has established long term relationships with partners and clients in countries across the globe and in varying regulatory environments, including the pharmaceutical industry.

SICPA's competences are applicable to **serialisation technology** and **authentication solutions** for regulatory and fiscal authorities as well as for major industry players.

SICPA systems have been used to apply unique serialised codes to hundreds of billions of products globally over recent years, on a broad range of production lines.

Our global footprint, local alliances and service oriented approach are what make SICPA a safe and reliable partner to accompany you, as a pharmaceutical company, on your serialisation journey.

90+

YEARS  
SERVING  
CUSTOMERS

400+

BILLION  
SERIALISED  
PRODUCTS



GLOBAL  
OPERATIONS



PHARMA  
STANDARDS  
READY



GS1  
COMPLIANT

# GENESIS®

## SERIALISATION STATION



Enabling trust



## SERIALISATION STATION OVERVIEW

**Fast and automated** machine set up for **multi-size product** support.

**Marks up to 3 sides at a time** (front, back and top of the package).

Inspection system integrated with an automatic **ejection unit**.

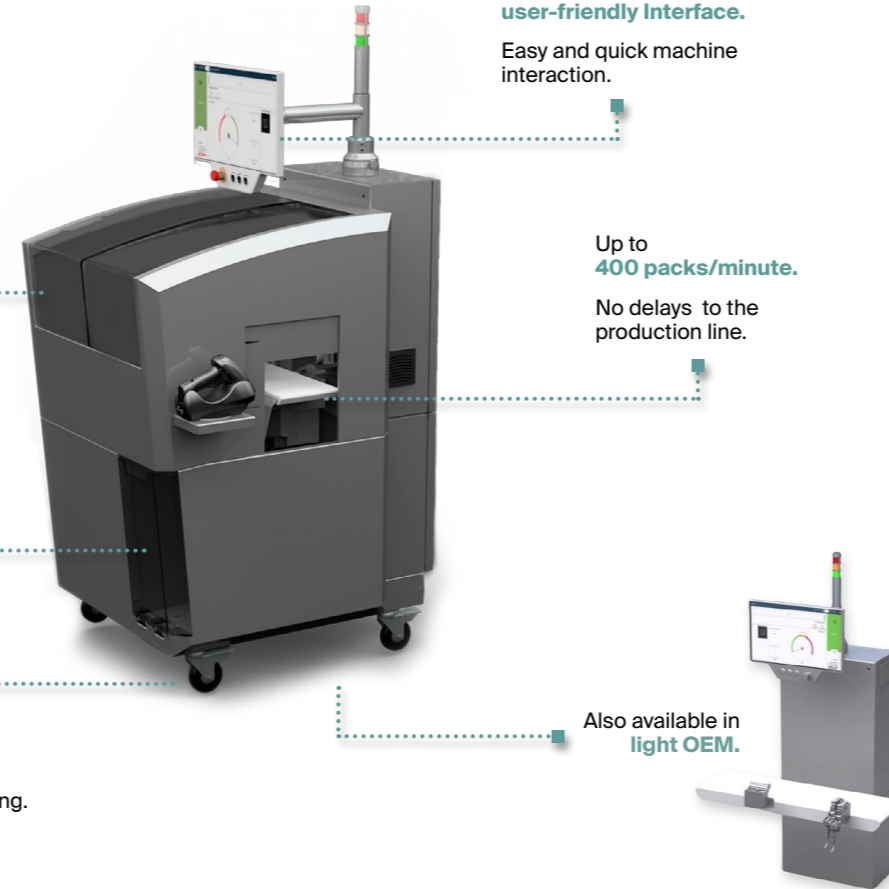
**Mounted on wheels.**  
Standard electrical plugging.

Wide touch screen control panel with **intuitive and user-friendly interface**.

Easy and quick machine interaction.

Up to **400 packs/minute.**  
No delays to the production line.

Also available in **light OEM.**



## ADAPTABLE AND FAST SET UP

The fully automated Serialisation Station handles the application of GS1 compliant codes through direct marking on up to 3 sides of the pack. It can manage different packaging sizes (from 15 to 110 mm high) and mark at high speed on production lines

running up to 400 items / minute. It carries an inspection system with integrated ejection unit and bin for removing faulty packs. This station is also available as an OEM kit, to be integrated onto pre-existing equipment.



**FULLY AUTOMATED**

Based on the production order selected by the operator, the Station automatically sets up the print heads, cameras and conveyor guides according to the size and type of product to be serialised.



**FAST SET UP**

Time saving machine set up reduces downtime between production batches.



**SWISS DESIGN**

Reliable and trusted equipment designed in Switzerland enables high performance in all production environments.

### MULTI-SIZE PRODUCT SUPPORT

Compatible dimensions:  
- width 30-140  
- length 40-240 mm  
- height 15-110 mm.

### MULTI-SIDE PRINTING

SICPA's unique 1 inch printheads mark up to 3 sides at a time and allow for efficient printing position adjustments.

### EASY & FAST CALIBRATION

The Diagnostic Tool allows for quick check of the main electronic device and fast calibration of motors position.

### QUICK SAMPLING

Sampling can be quickly done to check the quality, style, or nature of the production batch.

### ADVANCED RECIPE MANAGEMENT

Easy recipe configuration through the serialisation manager software functionalities.

### CRYPTO COMPATIBLE

Supports signatures generated externally for each individual serial number to guarantee the authenticity of the code. It uses the GS1 AI 91 and 92.

### MULTIPLE MODES AVAILABLE

To perform fine adjustments of the station, to clean possible issues, to configure the machine and prepare for production, different modes are made available.

## TECHNICAL FEATURES

CONVEYOR	Number of tapes	3
	Type of conveyor belt	flat smooth belt
	Linear conveyor speed	from 10 to 80 m/min
	Performance	Up to 400 pack/min
SUPPORTED PACK SIZE	Clamping conveyor	Glued belt
	Width, mm	30-140
	Length mm	40-240
PRINT CONTROL SCANNER	Height mm	15-110
	Name, model	COGNEX Insight 7412 camera
	Resolution, pixels	1280x1024 pixel
PRINTER	Number of scanners	Up to 3 (1 per printing side)
	Name, model	TIJ SICPA
	Printing method	Thermo Inkjet
	Print resolution, dpi	150 / 300 / 600
	Print height, inches	1"
	Printhead type	single 1 inch printhead
	Number of printheads	Up to 3 (1 per printing side)
REJECTION	Rejection unit	Internal, pneumatic, with locking bin
	Compressed air connection required	1-10 bar
MONITOR	Screen type	Touchscreen
	Diagonal	18,5"
	Resolution, pixels	1366 x 768
MACHINE CHARACTERISTICS	Dimensions (HWWHD), mm	1900 x 1100 x 800
	Weight, kg	265
	Voltage supply	Rated Voltage: 220-240 VAC, 50/60Hz, 1 phase
	Power consumption	2A
	Protection class	IP40
	Performance material	stainless steel
	Operating temperature, ° C	15°C to 35°C
	IT main functionalities	Production Order Execution (start/pause/resume/complete/release) Production progress and status Live pictures Equipment monitoring Service Mode Sampling

GENESIS®

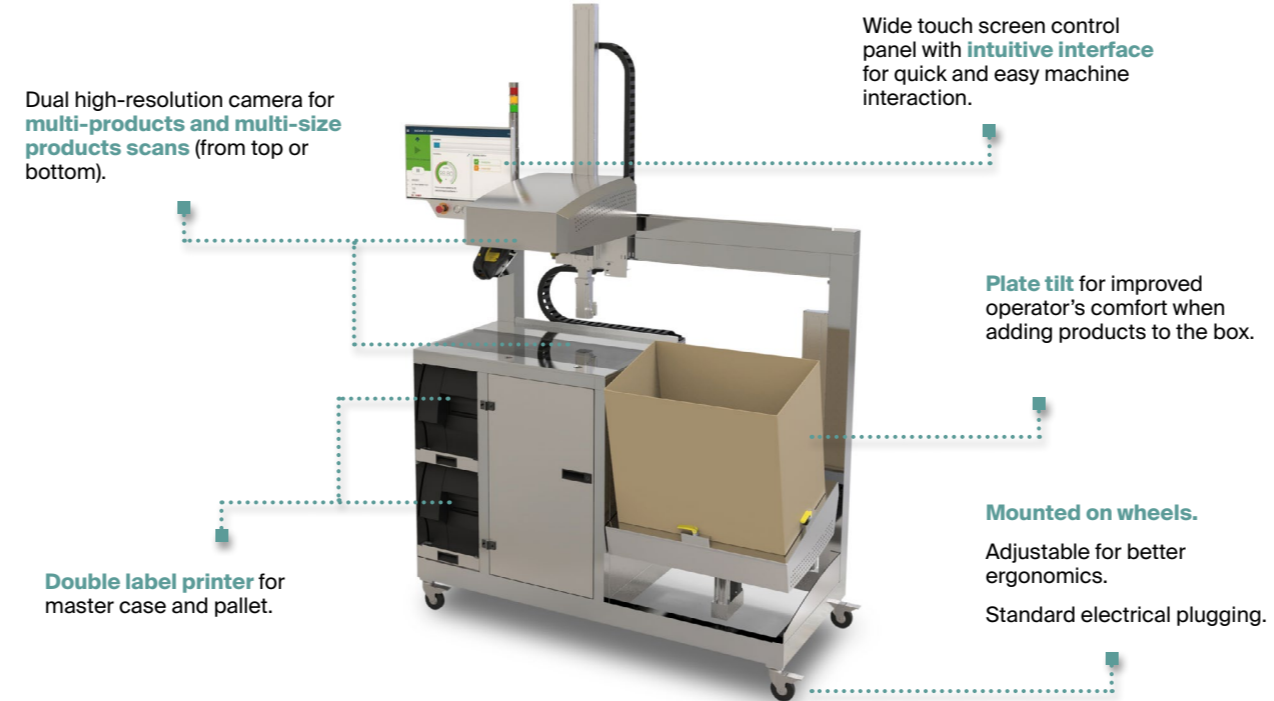
AGGREGATION STATION



Enabling trust



## AGGREGATION STATION OVERVIEW



## TECHNICAL FEATURES

MACHINE CHARACTERISTICS	Dimensions (HWWHD), mm	1940 x 1440 x 680
	Weight, kg	290 kg
	Power consumption	1.5 A
	Performance material	stainless steel
	Operating temperature, ° C	15°C to 35°C
PRINTER	Name, model	Zebra ZT410
	Print resolution, dpi	203
	Maximum printing width, mm	104
	Maximum printing speed, mm / s	356
	Number of printers	2
CAMERA	Name, model	Baumer LXG-250M
	Chromaticity	Monochrom
	Matrix resolution	25 Mpix
	Resolution, pixels	5120 x 5120
	Coverage area, LxW, mm	600 x 400
MONITOR	Height of the camera, mm	60 mm (camera) + 120 mm (lens)
	Name, model	Beckhoff - CP3918-1013-0010
	Screen type	Touchscreen
	Diagonal	18,5"
	Resolution, pixels	1366 x 768
ADJUSTABLE TABLE	Tilt angle, degrees	0° - 45°

## ERGONOMIC AND USER FRIENDLY

The semi-automated Aggregation Station has been designed to be easily moved across the production floor.

It carries 2 adjustable HD cameras that can be setup to capture codes from the top or the bottom of the line, or even from above the carton box for optimal efficiency. Adjustable in height and orientation, it can manage large

quantities of the same product, as well as boxes containing mixed products.

It features 2 sticker printers for continuous flow.

Aggregating boxes to master case and master case to pallets has never been this easy and efficient.



### ADAPTABLE

Adapts to various box sizes, as well as packing multiple-sized boxes at the same time.



### MOBILE

Easily movable station thanks to wheels and simple connectivity.



### ERGONOMIC

Ergonomic design made in Switzerland for optimal comfort and efficiency.

### MULTI-LAYER VALIDATION

Allows the operator to work with layers of products until the box is completed. The station validates the consistency of codes and the number of products.

### BOTTOM-UP SCANNING

Ability to use the bottom-up camera to read the Datamatrix.

### MULTI-PRODUCTS & MULTI-IDENTIFIERS

Ability to read at the same aggregation different GTINs and GTINs from different batches as well as different GS1 code types (Datamatrix structure, barcode...).

### EASY & FAST CALIBRATION

The Diagnostic Tool allows for quick check of the main electronic device and fast calibration of motors' position.

### STANDALONE MODE

The Aggregation station can work independently on a specific production order.

### PALLET AGGREGATION

Ability to aggregate serialized products until pallet level.

### QUICK SAMPLING

Sampling can be quickly done to check the quality, style, or nature of the production batch.



**SICPA**

World Headquarters  
Av. de Florissant 41  
1008 Prilly  
Switzerland

Tel +41.21.627.55.55  
Fax +41.21.627.61.80  
[pharmaserialization@sicpa.com](mailto:pharmaserialization@sicpa.com)  
[www.sicpa.com](http://www.sicpa.com)

Worldwide locations:  
Visit [www.sicpa.com/locations](http://www.sicpa.com/locations)

© 2019 SICPA SA, Switzerland

SICPA is certified to ISO 9001:2008, ISO 14001:2004 and OHSAS 18001:2007, according to a worldwide deployment programme, in the framework of a unique Integrated Management System. All material in these pages, including text, layout, presentation, logos, icons, photos and all other artwork including any derivative work, is the intellectual property of SICPA (for the purpose of this document the word "SICPA" shall mean SICPA HOLDING SA or any of its parent or affiliate companies) unless otherwise stated, and is protected by trademark, patent or copyright. No reproduction, derivative, or commercial use of any material is authorized without the prior express written permission by SICPA. Information contained in, or derived from, these pages shall not be used for development, production, marketing of any product or service, or for any other purpose, without the express prior written permission of SICPA.